

LOWDHAM
HORTICULTURAL SOCIETY

FOUNDED IN 1893

AFFILIATED TO THE
ROYAL HORTICULTURAL SOCIETY

2022
SUMMER SHOW

AT THE VILLAGE HALL AND PLAYING FIELDS
LOWDHAM

BANK HOLIDAY MONDAY
29TH AUGUST
1PM

ENTRANCE TO SHOW GROUND

£2.50

Children under 16 yrs. of age

FREE

www.lowdhamhortsoc.org.uk

Lowdham Horticultural Society through the years

Extracts from our archives

- 1893** The first Annual Show of flowers, plants, fruit and vegetables in connection with the Lowdham and District Horticultural Society was held in a field at the rear of the Magna Charta Inn.
Newark Advertiser July 26th 1893
- 1933** Prior to 1933 the Flower Show was organised under the direction of a committee named 'Lowdham and District Branch of the Nottingham Children's Hospital Cot and Free Medicine Fund!' In the five years 1928 – 1933, £1000 was raised to support these causes.
- 1947** The Schedule included classes for Half a Pound of Mushrooms (naturally grown), 5 Bantam eggs, Best Chicken Dressed and Trussed and Best Jar of Bottled Fruit.
- 1948** Last year of the combined Horticultural Show and Gymkhana. The Gymkhana Classes included Style and Appearance, Juvenile Jumping, Musical Poles and Fancy Dress.
- 1953** The show was held on the wettest day of the year. Nevertheless the number and standard of entries was very high indeed.
Committee Minutes 1954.
- 1960** A record number of entries (710) despite a heavy thunderstorm. The Show was opened by former soccer star Tommy Lawton who was landlord at the Magna Charta. Mrs Lawton presented the prizes.
Nottingham Guardian August 24th 1960.

RULES - 2022 SHOW

1. The Show is open to everybody regardless of where they live.
2. Exhibits will be staged on Monday 29th August, between 8 am and 10.30 am, NO ENTRIES ACCEPTED AFTER 10.30 am when a bell will be rung.
3. Judging will commence promptly at 11 am.
4. NO EXHIBITS WILL BE MOVED UNTIL AN ANNOUNCEMENT IS MADE IN THE MARQUEE - AT APPROXIMATELY 4.30 pm.
5. The Society Rules for judging the Horticultural Classes are based on the recommendations of the Royal Horticultural Society (RHS), and the decision of the judges is final.
6. Winners of the Banksian Medal in 2020 may not be awarded the medal in 2021 and the winner in 2021 may not be awarded the medal in 2022 or 2023 under RHS rules.
7. The Novice Classes are for people who have not won a 1st prize in the Main Classes.
The prize money and points awarded in these Classes will not count towards the totals for the Society's Cups and Trophies.
8. No exhibitor may be awarded more than one prize in any one class.
9. The following scale of points is used to calculate winners of Cups and Section Awards:

Classes 1, 33 & 78:	1st: 10 points	2nd: 6 points	3rd: 4 points
Classes 2, 3, 4, 34, 35 & 83:	1st: 7 points	2nd: 4 points	3rd: 3 points
Remainder Classes:	1st: 5 points	2nd: 3 points	3rd: 2 points

10. The Royal Horticultural Society Bronze Medal will be won outright.
The Nottingham Evening News Challenge Cup, The Pearson Bowl, The Walter Bennett Plate, The Hoveringham Cup, The Fred Furley Memorial Cup, The MacAlpine Challenge Cup, The Smith Challenge Cup, The George Haggis Memorial Trophy, The T. F. Revell Memorial Cup, The David Rees Memorial Cup, The Burton Challenge Trophy, The Reddish Memorial Plate, The Lowdham Horticultural Society Plate, The LHS Summer Show Winner Trophy and the Charles King Memorial Cup and The Mrs V Birkin Trophy are perpetual challenge trophies which will be held by the winners for 12 months.
The winners are to give satisfactory security to the Society that the trophies will be returned to the Hon. Show Secretary two weeks before the date of the following show.
11. In the event of two or more exhibitors having equal numbers of points competing for a cup, medal or bowl, the award will go to the exhibitor having the greatest number of first prizes.
12. All competitors who wish to claim their prize money should apply to the Treasurer between 4 and 5 pm.
13. The Committee will not be responsible for loss or damage to any exhibit or property whilst in its custody.
14. The Committee reserves the right to refuse any entry.

For your **complete** professional advice & design

PALING'S
soft furnishings

established over 50 years

The home of designer fabrics & wallpapers

Electric & Manual Blinds
Made to measure Curtains
Headboards and Bedsteads
New Suites, Sofas and chairs

FREE home consultancy and fitting service

Modern Fabrics
Loose Covers
Re-upholstery
Wallpapers
Poles and Rails
Carpets

Showrooms & Workrooms

 www.palings-interiors.co.uk

 0115 9664 694  info@palings-interiors.co.uk

 Main Street, Corner of Ton Lane, Lowdham, Nottingham NG14 7BD

Opening Times

Monday:	10.00am ~ 5.00pm
Tuesday:	10.00am ~ 5.00pm
Wednesday:	10.00am ~ 5.00pm
Thursday:	10.00am ~ 5.00pm
Friday:	10.00am ~ 5.00pm
Saturday:	10.00am ~ 1.00pm

☐ Special Order Service
on Books, CDs & DVDs

☐ Loyalty Card

☐ Book and Film Festivals

☐ School Supply Service



THE BOOKCASE

www.thebookcase.co.uk
www.nottinghambooks.co.uk

50 Main Street, Lowdham
Nottingham NG14 7BE
Telephone: 0115 966 4143
Fax: 0115 966 3219
Email: janestreeter@thebookcase.co.uk

Lowdhams are proud sponsors
of Lowdham Horticultural Society
Summer Show 2022

Quality New & Used CARAVANS & MOTORHOMES



ON YOUR DOORSTEP - VISIT TODAY!



**ONLY 5
MINUTES
FROM
THE SHOW**



**LOWDHAMS
PORTFOLIO**

AIRSTREAM

BAILEY

CHAUSSEON

Sunlight

Dethleffs

ERIBA

HYMER

SWIFT

SUNLIGHT

Lowdham Leisureworld
Lowdham Road, Gunthorpe
Nottingham NG16 7BS
☎ 0115 966 3838

**Award
Winning
Sales &
Service
SINCE 1966**

Lowdhams
First for quality & value

 **www.lowdhams.com**

Black Horse Inn

Caythorpe

Just a pub, good draft beer, dog friendly, no children

Evenings Wednesday to Saturday 5.30pm - 10.30pm

Sunday 7pm - 10pm

Lunchtimes Saturday 12 - 2.30pm Sunday 12 - 5pm

Sandwiches available if booked in advance

0115 9663520 NG14 7ED

Lowdham Village Post Office

Euros, US Dollars, Turkish Lira on demand in store.

Travel insurance and new Travel Moneycard.

Free cash withdrawals from most major banks.

Cheque banking facility for most high street banks.

Large range of cards and giftware.

Confectionery, stationery and pet food.

OPEN 8.30am — 5.30pm Monday to Friday

9am — 12.30pm Saturday



Show competitors staging their exhibits.



Enjoying the band at our Summer Show.



Trip to Floral Media.



Daffodil entries at our Spring Show.



Spring Show - Children's classes.



The Dako Flying Angels.



Charlotte and the team warmly invite you to the World's End for a fine selection of beverages and home cooked fresh foods to warm the cockles.



Kitchen opening times

Tuesday – Thursday 12pm - 2:30pm & 5:30pm – 8:30pm

Friday – Saturday 12pm – 8:30pm

Sunday 12pm – 5pm

Look out for our theme nights too!



Call 0115 9663857 to book now!

Visit the delightful Dutch bulb fields

Keukenhof is a truly unforgettable experience. This historic park with more than 2,700 trees covers an area of 32 hectares and is full of tulips, hyacinths, daffodils and many other spring bulbs. The floral displays in the park and the unique flower shows are a glorious visual feast.

Antwerp & Amsterdam 5-night cruise

This escape to two attraction-packed cities in the Netherlands and Belgium makes for a rewarding Bank Holiday break filled with a feast of sights and scents.

Visiting Amsterdam will be a particular highlight; enjoy time to experience the seasonal delights of the world famous Keukenhof Gardens, where millions of tulips burst into life with vibrant colour and fragrance in the spring, and enjoy the sweet scents of the city's flower markets.

- Visit Keukenhof Gardens in Amsterdam
- Explore the exciting city of Antwerp
- Opt for a boat tour to Ghent from Antwerp along picturesque canals

**Sailing from
Newcastle
28 April
2023. Prices
from £699pp**

What's included?

- Full board with 5-course à la carte dinners
- Glittering entertainment, including cabaret shows, live music & dancing
- Use of leisure facilities, including gym, Jacuzzis & swimming pools
- En suite cabin with TV, hairdryer, tea & coffee making facilities, in-cabin dining & snacks

Mainline



For further information, please visit our office in Gedling; call us on **0115 961 1222**; or send us an email to **enquiries@mainline-travel.com**



Lowdham
Pre-school

Preschool Provision

Ages 1 – 5 years ☺



Sessions available for
September 2022

At Lowdham Village Hall &
our Brackenhurst Forest
School site

Opening hours: 7.30am – 4pm

Monday to Friday

A variety of session times available

**Breakfast Club open to Lowdham Primary
School children**

Holiday club available for all children!

follow us on Facebook

Mobile. 07432775965

Email. hellolowdhampreschool@gmail.com





**HOVERINGHAM
MAMMOTH
SELF STORE LTD**

MORE STORAGE FOR LESS

High quality facilities providing the same or better price as standard containers

24H KEY FOB ACCESS

CTV SECURITY

01636 830888

WWW.HMSELFSTORE.CO.UK




**HOVERINGHAM
MAMMOTH
VAN HIRE LTD**

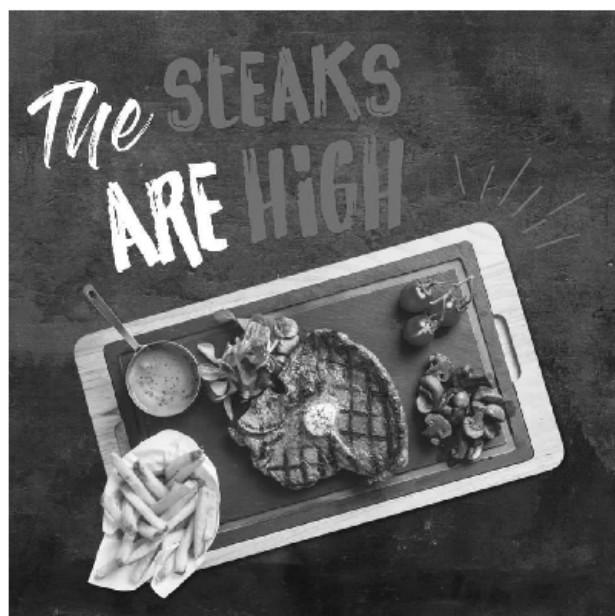
QUALITY LOCAL VAN HIRE

01636 830888

HMVANHIRE.CO.UK

NEW FARM, HOVERINGHAM R.D., HOVERINGHAM, NOTTINGHAM NG14 7JX





MAGNA CHARTA



There is always a reason to visit the Magna Charta, with a menu built around quality char grilled steak, chicken, fish, vegetarian & vegan dishes, plus a choice of pub classics that everyone loves.

Whether it be lunch, dinner or just a few drinks with friends.

Interactive quiz night every Tuesday from 7:30pm, with Sticky 13s.

Monthly food & drink specials!

Like our Facebook & Instagram for special events and offers.

2022 COMMITTEE

Chairman: Mrs N Macdonald
Secretary: Mrs C Baggaley
Show Secretary: Mrs A Cross
Treasurer: Mr A Horne

Mrs T Aram	Mrs S Campbell	Miss J Halpin
Mrs B Beales	Mrs A Cross	Mrs T Tunstall
Mr G Burton	Mrs S Giles	Mr P McDonnell

LIFE MEMBERS

Rev. E Ashby	Mrs C Baggaley	Mr P McDonnell
Mrs M Ashby	Mrs J Hardy	Mrs H Turner

SHOW JUDGES FOR 2022

Vegetables:	Mr J Croot
Fruit:	To Be Confirmed
Flowers:	Mr M Davey
Floral Art:	Mrs J Borrowdale
Produce:	Mrs H Crowder
Photography:	Mr D Hollingsworth
Young People Classes:	Mrs C Statham
Handicrafts:	Mrs D Cranstone
Preserves:	Mrs D Yates

Show Secretary:	Mrs A Cross	Tel: 0115 966 5285
Show Treasurer:	Mr A Horne	Tel: 0115 966 4453

The Committee will be very pleased to receive surplus produce, exhibits, donations and gifts of any kind and size for sale on the Produce and Gift Stalls and at the Auction at the end of the Show.
All proceeds will swell the Prize Fund.

Produce and gifts will be auctioned at approximately 4.30 pm.

The Committee is grateful to donors who have sponsored the prize money for the Collections in the Show and those who provided gifts for the raffle.
We would also like to thank the businesses who have advertised in our schedule.

SPECIAL AWARDS & 2019 TROPHY WINNERS

NOTTINGHAM EVENING NEWS CHALLENGE CUP:

Awarded to the exhibitor gaining the greatest number of points in the Horticultural Classes.

Ron Betts

RHS BANKSIAN MEDAL:

Awarded, according to the RHS rules, to the winner of the largest total amount of prize money in the whole of the Horticultural Classes in the Show (Excluding Classes 4 & 83).

Geoff Burton

T. F. REVILL MEMORIAL CUP:

Awarded to the winner of Class 1 (Collection of vegetables, 6 different kinds).

Ron Betts

FRED FURLEY MEMORIAL CUP:

Awarded to the exhibitor gaining the greatest number of points in all the Vegetable Classes 1-28.

Ron Betts

SMITH PERPETUAL CHALLENGE CUP:

Awarded to the exhibitor gaining the greatest number of points in the Fruit Classes 29 to 40.

Geoff Burton

GEORGE HAGGIS MEMORIAL TROPHY:

Awarded to the exhibitor gaining the greatest number of points in the Flower Classes 78 to 110.

Maureen Handley

CROFT CUP FOR COLOUR CONTENT:

Awarded to the winner of Class 108.

Christina Lindley

WALTER BENNETT PERPETUAL CHALLENGE PLATE:

Awarded to the exhibitor gaining the greatest number of points in the Flower Arrangement Classes 62 - 67.

Christine Baggaley

PEARSON PERPETUAL CHALLENGE BOWL:

Awarded to the winner of Class 89. A container of shrubs, 5 kinds, flowering.

Christine Baggaley

HOVERINGHAM PERPETUAL CHALLENGE CUP:

Awarded to the exhibitor gaining the greatest number of points in the Produce Classes 48 to 60.

Christine Baggaley

McALPINE PERPETUAL CHALLENGE CUP:

Awarded to the exhibitor gaining the greatest number of points in the Young People Classes 68 to 72.

Lara Kitchen

LHS SUMMER SHOW WINNER CUP:

Awarded to the exhibitor gaining the greatest number of points in the Young People's Classes 73 - 77.

Caitlin Macdonald

MRS V. BIRKIN TROPHY:

Awarded to the exhibitor gaining the greatest number of points in selective Preserve Classes.

Christine Baggaley

RHS BRONZE MEDAL FOR FLOWERS:

Awarded to the best exhibit in the Flower classes (excluding Class 108).

Malcolm Fisher

RHS BRONZE MEDAL FOR VEGETABLES:

Awarded to the best exhibit in the Vegetable Classes (Excluding the Collections.).

Ron Betts

RHS BRONZE MEDAL FOR FRUIT:

Awarded to the best exhibit in the Fruit Classes (Excluding the Collections.).

Geoff Burton

LOWDHAMS VEGETABLE TRAY:

Tokens awarded for the collection of 3 vegetables from the nominated 8 vegetables.

Ron Betts

LOWDHAMS FLOWER VASE:

For a vase of mixed flowering stems.

Christina Lindley

DAVID REES MEMORIAL CUP:

Awarded to the exhibitor gaining the greatest number of points in the Photographic Classes.

Lynda Shelton

BURTON PERPETUAL CHALLENGE TROPHY:

Awarded to the exhibitor with the Floral Art – Best in Show.

Christine Baggaley

LOWDHAM HORTICULTURAL SOCIETY PLATE:

Awarded to the best Young Peoples exhibit.

Lily Goodchild

CHARLES KING MEMORIAL TROPHY:

Awarded to the exhibitor with the most points in the Pot Plant Classes.

Malcolm Fisher

GERRY REDDISH MEMORIAL PLATE:

Awarded to the exhibitor with the most points in the Dahlia and Chrysanthemum Classes.

Ray Easom

HEAVIEST POTATO AWARD:

Gill Nall

SCHEDULE of CLASSES

**An Entrance Fee of 30p per exhibit applies to all exhibits.
Young People's classes are FREE**

Prize Money (unless otherwise stated):

1st - £2.50 2nd - £2.00 3rd - £1.50

All entries need to have been accepted and staged by 10:30 am,
when a bell will be rung and the marquee will be cleared.

VEGETABLE COLLECTIONS - Please state variety where known

1. Collection of vegetables, 6 different kinds 2 of each
Prizes: 1st - £10.00 2nd - £5.00 3rd - £3.00
2. Collection of potatoes, 3 different varieties, 3 of each
Prizes: 1st - £4.00 2nd - £3.00 3rd - £2.00
3. A basket of mixed vegetables, 8 different kinds, any number of each, to be judged for variety, quality & effect.
Prizes: 1st - £4.00 2nd - £3.00 3rd - £2.00
4. LOWDHAMS VEGETABLE TRAY
Collection of 3 different kinds of vegetables, 2 of each
Prizes: 1st - £10.00 2nd - £5.00 3rd - £3.00
The Rules for this Class are given later in the Schedule

The **T. F. REVELL MEMORIAL CUP** will be presented to the winner of Class 1

VEGETABLE CLASSES - Please state variety where known

5. 3 Parsnips with tops, foliage trimmed back to 7.5cms (3ins)
6. 3 Blanched Leeks
7. 2 Cabbages
8. 3 Carrots any variety with tops, foliage trimmed back to 7.5cms(3ins)
9. 12 Shallots, judged on size and quality
10. 1 Squash
11. 5 Globe Onions dressed
12. Pair of Cucumbers
13. 5 White Potatoes
14. 9 French Beans
15. 5 Coloured Potatoes
16. 5 Flat Onions dressed

VEGETABLE CLASSES- CONTINUED

17. Plate of 6 Tomatoes
18. 8 Kidney Beans
19. Pair of Marrows
20. Pair of Lettuces (with roots)
21. Pair of Peppers
22. 5 Onions, dressed, round or flat. Individual bulbs to be 250 grams or less in weight
23. 3 Beetroot, round foliage trimmed back to 7.5cms (3ins)
24. Small container of mixed herbs (cut)
25. A Truss of Cherry Tomatoes
26. 3 Courgettes
27. Plate of 12 Cherry Tomatoes (individuals not to exceed 35 mm in diameter)
28. One plate of any vegetable other than those specified in Classes 5 to 27
29. The Longest Kidney Bean
- 29.a Greatest potato crop by weight (MEMBERS ONLY CLASS potato and pot were provided by LHS at the Spring Show)

The **FRED FURLEY MEMORIAL CUP** will be awarded to the exhibitor who gains the greatest number of points in Classes 1 to 28 inclusive.

NOVICE VEGETABLE CLASSES

Prizes: 1st - £2.50 2nd - £2.00 3rd - £1.50

30. 5 Tomatoes
Well shaped, clear skinned rounded fruits, ripe but firm. Richly coloured with calyces attached
31. 6 Kidney Beans
Long, uniform, straight, shapely, fresh pods of good colour with stalks, uniform tails and no outward sign of seeds
32. Plate of other vegetables (3 of a kind)
Well formed vegetables with size and colour characteristic of their kind, free from blemishes

FRUIT CLASSES - Please state variety where known

(ALL FRUIT SHOULD BE SHOWN WITH STALKS)

33. 5 different kinds of fruit, displayed on separate plates, one variety to a plate
Prizes: 1st - £10.00 2nd - £5.00 3rd - £3.00
34. Collection of Apples, 4 distinct varieties, 5 of each
Prizes: 1st - £4.00 2nd - £3.00 3rd - £2.00
35. A basket of 4 kinds of fruit, grown by the exhibitor, arranged for effect
Prizes: 1st - £4.00 2nd - £3.00 3rd - £2.00
36. Plate of 5 Dessert Apples (Excluding Discovery)
37. Plate of 5 Pears
38. Plate of 5 Discovery Apples
39. Plate of 8 Plums
40. Plate of 5 Cooking Apples
41. Plate of 20 Blackberries
- 41a. Plate of 20 Raspberries
42. One Melon
43. Plate of 20 Damsons
44. Plate of One Kind of Fruit other than those specified in Classes 36 - 43

The **SMITH PERPETUAL CHALLENGE CUP** will be awarded to the exhibitor who gains the most points in Classes 33 – 44

NOVICE FRUIT CLASSES (ALL FRUIT SHOULD BE SHOWN WITH STALKS. PLEASE STATE VARIETY WHERE KNOWN.)

Prizes: 1st - £2.50 2nd - £2.00 3rd - £1.50

45. Plate of 3 Apples (Cooking or Dessert)
Optimum sized shapely fruits with eyes and stalks intact and clear unblemished skins.
46. Plate of 3 Pears
Optimum sized shapely fruits with eyes and stalks intact and clear unblemished skins.
47. Plate of any other kind of fruit
*Fresh, ripe fruit with size and colour characteristic of the type.
3 specimens for large fruit (apricots, figs etc.), 15 for small fruit (blackberries, raspberries, blueberries etc.), well shaped ripe bunch for grapes.*

PRODUCE CLASSES

- 48. 5 Maids of Honour (recipe given on page 18)
- 49.* Jar of jam
- 49a.* Jar of jelly
- 50. Savoury bread (own recipe)
- 51. 5 pieces of favourite tray bake (own recipe, state main ingredient)
- 52. Savoury flan (own recipe, state main ingredient)
- 53. 5 Cheese Straws (own recipe)
- 54.* Jar of lemon curd, with waxed disc
- 55. 5 pieces of Rocky Road (own recipe)
- 56. Orange and Raisin Loaf (recipe given on page 18)
- 57. Small bowl of pasta salad (own recipe)
- 58. A Novelty Cake (own recipe - to be judged on appearance and flavour)
- 59. 5 Fruit Scones (own recipe)
- 60.* Jar of chutney
- 61 MEN ONLY - 5 pieces of Flapjack (own recipe)

The **HOVERINGHAM PERPETUAL CUP** will be awarded to the exhibitor with the highest points in Classes 48 – 60

* The **Mrs. V BIRKIN TROPHY** will be awarded to the exhibitor with the highest points in Classes 49, 49a, 54 and 60

FLORAL ART 2022

FLOWER ARRANGEMENTS

Prizes: 1st - £5.00 2nd - £4.00 3rd - £2.50

Please Note: *Intention to enter the Flower Arrangement Classes must be notified to the Show Secretary before noon on Sunday 28th August in order that adequate space may be allocated for these exhibits.*

Show Secretary Mrs A Cross 0115 966 5285.

62. An arrangement not to exceed 45cm (18") in width or depth. Fresh flowers and foliage must predominate
This is a NOVICE class for anyone who has not won a 1st prize in a flower arrangement class at any Lowdham Horticultural Society Show.
63. A petite design using a container of your choice
Not to exceed 25cm (10") in width, depth or height. Fresh flowers and foliage must predominate.
64. Table Talk
Not to exceed 45cm (18") in width or depth. Fresh flowers and foliage must predominate .
65. Summer Garden
Not to exceed 60cm (24") in width or depth. Fresh flowers and foliage must predominate.
66. Simplicity
Not to exceed 45cm (18") in width or depth. An exhibit consisting mainly of foliage.
67. Little Treasure
Not to exceed 10cm (4 inches) in width or height. Fresh flowers and foliage must predominate.
- 67a. Welcome Ring - to be created on a 12 inch (approx.) floral ring designed to be hung to welcome guests. Using natural materials.

PLEASE NOTE. *Accessories may be included in any exhibit.*

The **BURTON PERPETUAL CHALLENGE TROPHY** will be awarded for the Best Flower Arrangement in the Show.

The **WALTER BENNETT PERPETUAL CHALLENGE PLATE** will be awarded to the exhibitor gaining the greatest number of points in Classes 63 to 67a.

YOUNG PEOPLE CLASSES

Up to 16 years of age. Age **must** be stated in order to be taken into consideration.

There will be a free gift awarded to every entrant in each Young People Class.

68. 5 Rock Buns (own recipe)	10 years or under
69. An animal made from fruit or vegetable	
70. A decorated plant pot	
71. Collage using natural materials (up-to A3 size)	
72. A model made from recycled materials	
73. A bug hotel	11 to 16 years old
74. An article of handicraft you have made	
75. An unusual houseplant	
76. Summer scene (A4 any medium)	
77. 3 fruit kebabs (own recipe)	

The **McALPINE PERPETUAL CHALLENGE CUP** will be awarded to the exhibitor gaining the greatest number of points in the Classes 68 to 72.

The **LOWDHAM HORTICULTURAL SOCIETY SUMMER SHOW WINNER CUP** will be awarded to the exhibitor gaining the greatest number of points in the Classes 73 to 77.

The **LOWDHAM SILVER PLATE** will be awarded to the best Young People's exhibit.

Maids of Honour

- 150g (6 oz) short crust pastry
 - Jam
 - 50g (2oz) margarine
 - 50g (2oz) caster sugar
 - 50g (2oz) self raising flour
 - 1 egg
1. Roll out pastry thinly cut in rounds using a 7.5 (3 in) cutter and line 16-18 pastry tins.
 2. Place a little jam in each.
 3. Cream margarine and sugar, fold in beaten egg and flour.
 4. Place a small spoonful of mixture in each pastry case.
 5. Bake in a moderately hot oven 200C, 400F, Gas mark 6 for about 15-20 minutes.

Orange and Raisin Loaf

- 200g (8oz) self raising flour
 - 100g (4oz) caster sugar
 - 150g (6oz) raisins
 - milk
 - 1/2 teaspoon bicarbonate of soda
 - 50g (1oz) margarine or butter
 - Grated rind and juice of 1/2 orange.
1. Mix flour and bicarbonate of soda, rub in fats.
 2. Mix in sugar, orange rind and raisins.
 3. Make the juice of the 1/2 orange up to 125ml (1/4 pt) with milk.
 4. Add to the dry ingredients and mix well.
 5. Place the mixture in a greased loaf tin approx. 1kg (2lb).
 6. Bake in a moderate oven, 160C, 325F, Gas mark 3 for about 1 1/2 hours.

FLOWER CLASSES

78. 6 kinds of flowers, 6 stems of each in 6 containers, judged for quality & effect
Prizes: 1st - £10.00 2nd - £5.00 3rd - £3.00
79. One Geranium in bloom
80. One vase of annuals, 6 of one kind
81. 3 blooms of Roses, one variety or mixed
82. + Dahlias, 3 blooms, up to 4"
83. **LOWDHAMS VASE:** A mixed vase of flowers containing a total of between 6 & 12 stems, taken from a minimum of two different kinds of plants.
Prize 1st - £10.00 2nd - £5.00 3rd - £3.00.
The Rules for this Class are given later in the Schedule
84. One Spray of Floribunda (cluster) Roses
85. One Gladiolus
86. One Rose Bloom with leaves
The **PEARSON PERPETUAL CHALLENGE BOWL** will be awarded to the winner of class 86.
87. 3 Stems of Shrub, one variety, flowering, fruiting or foliage. Maximum 24" width & depth
88. One Vase of Miniature Roses, the display not exceeding 12" in diameter
89. A Container of Shrubs, 5 kinds, flowering, fruiting or foliage. Maximum 24" width & depth
90. + Dahlias, 3 blooms, between 4" and 6"
91. 3 Gladioli, same variety or mixed
92. +. Dahlias, 3 blooms, over 6"
93. 6 stems of Herbaceous Perennials, one kind.
94. + 3 Blooms of Chrysanthemums, one variety or mixed
95. * One Foliage Pot Plant
96. + Dahlias, 5 blooms, pompon, maximum diameter 2"
97. * 3 flowering Pot Plants, pots not exceeding 6" in diameter. Same kind or mixed
98. 9 Asters, same variety or mixed
99. One cactus or succulent, in a pot, maximum pot diameter 4"
100. * One Flowering Pot Plant
101. Pansies, 6 blooms, one variety or mixed. Display board provided by the Society

FLOWER CLASSES - CONTINUED

- 102. One Cactus or Succulent, in pot over 4" diameter
- 103. One Vase of Mixed Annuals
- 104. One Fuchsia in a pot
- 105. + 3 Stems of Spray Chrysanthemums, one variety or mixed
- 106. * 3 Foliage Pot Plants
- 107. 6 Stems of Sweet Peas
- 108. A Container of Flowers and Foliage from your garden.
To be judged on colour content only - **this is NOT "an arrangement"**
The **CROFT CUP** will be awarded to the winner of this class.
- 109. Flower heads floating in a bowl of water (max diameter 9")
- 110. One Patio Planter, maximum container width 18"

+ The **GERRY REDDISH MEMORIAL PLATE** will be awarded for the most points in the Dahlia and Chrysanthemum Classes 82, 90, 92, 94, 96 & 105.

* The **CHARLES KING MEMORIAL CUP** will be awarded for the most points in the pot plant classes 95, 97, 100, & 106.

The **NOTTINGHAM EVENING NEWS CHALLENGE CUP** will be awarded to the exhibitor gaining the greatest number of points in the Horticultural Classes.

The **GEORGE HAGGIS MEMORIAL TROPHY** will be awarded for the most points in Classes 78 – 107, 109 & 110.

NOVICE FLOWER CLASSES

Prizes: 1st - £2.50 2nd - £2.00 3rd - £1.50

- 111. Rose
Average size for the type with good colour and evenly spaced petals free from blemishes
- 112. Vase of Mixed Summer Flowers
Judged on quality and colour
- 113. Vase of one kind of Annuals or Perennials
Judged on quality

PHOTOGRAPHIC CLASSES

All entries to be unmounted without frames

Max. Size 9"	Size Over 9"	Subject
114.	118.	SHEDS
115.	119.	ROSES
116.	120.	WAVES
117.	121.	MARKETS
122		A FUNNY SELFIE A class for 16's and under (Not included in the points for the D.R. Cup).

("Size" is the greatest measurement of the photograph)

The **DAVID REES MEMORIAL CUP** will be awarded to the exhibitor gaining the greatest number of points in the Photographic Classes.

SUBJECTS FOR PHOTOGRAPHIC CLASSES 2023

Get clicking for next year!!

FUNGI, RARE BREEDS, HARVEST TIME, CLOUDS.

Under 16's class for 2023

PETS.

If you have any favourite subject you would like to be included let us know and we can include it in the future - subject to the Committee's approval!!

HANDICRAFT

An item of handicraft made by the exhibitor not previously shown

- 124. A Cross Stitch Picture
- 125. A Handmade Toy
- 126. A knitted garment
- 127. A handmade Card

FOR ANY QUERIES REGARDING THE HORTICULTURAL SOCIETY OR
THIS SCHEDULE YOU CAN CONTACT:

Mrs A Cross Tel: 0115 966 5285
Mrs C Baggaley Tel: 0115 966 3734

Lowdhams Vegetable Tray 2022

Class 4

COMPETITION RULES:

- All vegetables are to be displayed for effect, 2 of each kind
- They must be displayed within an area measuring 45cm x 60cm (18 x 24 in) without bending any part of them. No part of them may exceed the size of the tray.
- A tray of the correct size will be provided by the society, or an area can simply be marked on the staging.
- Parsley is allowed for garnishing. However no other foliage or accessories including plates or sand rings are allowed.
- Onion tops may be tied or whipped using raffia or string.

The winner of the **Lowdhams Vegetable Tray** will receive:

1st £10.00 2nd £5.00 3rd £3.00

Prize money donated by Lowdhams.

NOTES FOR EXHIBITORS AND JUDGES

- Carrots and parsnips must have foliage trimmed back to 7.5cm (3in)
- Peas and beans must be displayed with some stalk attached.
- Tomatoes must be displayed with the green flower bud case (calyces)
- Judges may handle exhibits, open pods etc. to check for quality.
- The tray, board or staging may not be cut or mutilated in any way e.g. cutting holes for onions to stand in.
- Judges should use their discretion, entries may have come from inexperienced exhibitors.
- Points awarded should be clearly marked by judges on the exhibitor's cards.
- Any queries, other than the above rules, should be referred to, and decided by the Show officials.

Failure to abide by any of these rules will lead to disqualification.

Lowdhams Flower Vase 2022

Class 83

COMPETITION RULES:

- This class is for a vase of mixed flowering stems containing a total of between 6 and 12 stems, taken from a minimum of two different kinds of plants.
- Please note that it is two different KINDS of plants, two varieties of the same plant are NOT two kinds.
- The display will be judged out of a total of 35 points, split into: 25 points for the colour, form, condition, quality and freshness of the flowers on display, and 10 marks for the overall presentation and effect of the flowers in the vase.
- The vase will be viewed from all directions.
- Judging of the flowers should be to the normal rules used for other classes.
- Stems used in the display must be showing flowers only; no seed heads or berries will be allowed.
- The vase can be any shape and size and made from any material, but must be in proportion to the display.
- No marks are awarded for the vase itself.
- No accessories whatsoever such as bows and additional foliage will be allowed. Foliage which is growing naturally from the flowering stem, and still attached to that stem, is allowed. Packing material - including Oasis - to keep the stems in place is allowed.

The winner of the **Lowdhams Flower Vase** class will receive:

1st £10.00 2nd £5.00 3rd £3.00

Prize money donated by Lowdhams.

NOTES FOR EXHIBITORS AND JUDGES

- Flowering stems can be taken from ANY flowering plant.
- The different kinds of plants need to be taken from different genera
For instance, pinks, carnations and sweet william - which are all dianthus - would not be classed as different kinds.
- Only fresh, home-grown flowers can be used in the vase. No dried or silk flowers are allowed.
- A vase, by definition, is any vessel that can be used to hold cut flowers and which is taller than it is wide at its widest point.
- This class is open for anyone to enter and is not intended purely for growers who regularly display single species classes at shows.
- Judges should use their discretion when judging the Lowdhams Flower Vase class, bearing in mind that the entries may come from inexperienced exhibitors.
- Judges and exhibitors should note that the display has to be viewed all round.
- The points awarded should be clearly marked by the judges on the exhibitors' cards.
- Any queries that may arise, regarding anything other than the above rules, should be referred to, and decided by, the show officials.

Failure to abide by any of these rules will lead to disqualification.

Lowdham Horticultural Society

AUTUMN FESTIVAL

Sunday 23rd October
11am - 2pm
Lowdham Village Hall

autumn fruit and vegetables
jams and chutneys from local produce
competitions and children's activities
pumpkin sculpture
cookery demonstrations
hot and cold refreshments

£1 adults children free

www.lowdhamhortsoc.org.uk

LowdhamPharmacy⁺

FREE
**Prescription Collection and
Delivery Service**

Contact us for more details



**Huge range of products available
to order on our website**

www.lowdhampharmacy.co.uk

**Download
our free App
to Order
and Track
Prescriptions**



Opening Times:

Monday to Friday: 9am – 6pm
Saturday: 9am – 1pm

Telephone: **0115 966 3228**

49 Main Street, Lowdham, NG14 7AB



Passionate about plants



Visit us today...

See our wide range of alpinas,
bedding, hedging, herbs, herbaceous
perennials, roses, shrubs, trees,
vegetable plants...plus much more!

**Hilltop
Nurseries**

Lambley Lane, Gedling, Nottingham NG4 4PB T: 0115 9612054

www.hilltopnurseries.co.uk

Frank Key.

BUILDING SUPPLIES & PLANT & TOOL HIRE



Frank Key Group is a leading independent provider of building supplies, plant & tool hire, landscaping and kitchens & bathrooms to the trade and public.

Branches across Nottinghamshire, Derbyshire, Yorkshire & Lancashire.

www.frank-key.co.uk

What You Need. When You Need It.

The Society

The Lowdham Horticultural Society was founded in 1893 with the first show taking place in August that year.

If you have an interest in flowers, fruit and vegetables and enjoy social gatherings why not join the society? We have two shows each year: The Spring Show in April and the Summer Show in August, plus the Autumn Day in October.

Visits are arranged to interesting places in the summer months and during the winter we have a series of monthly talks in Lowdham Community Room (NG14 7DQ) at 7.30 on Thursday evenings.

The Annual Subscription is £10.00. A £3 charge is made for non-members attending the winter talks and everyone is welcome.

For the benefit of members the Society operates a subsidised seed scheme and subsidised coach trips to places of gardening interest.

The Society Secretary is Christine Baggaley, telephone: 0115 966 3734.

Why not have a look at our website for details of the Society and any forthcoming events.

www.lowdhamhortsoc.org.uk

New Member's Form

Membership to Lowdham Horticultural
Society costs £10 a year.

Our membership year starts in September
and runs to the Summer Show the following
August.

Name _____

Address _____

Telephone _____

Email _____

Please return to 6 Ton Lane, Lowdham or
email to na246@btintertnet.com

LOWDHAM HORTICULTURAL SOCIETY

APPROXIMATE TIME TABLE 2022

8.00 am STAGING OF EXHIBITS COMMENCES

10.30 am STAGING OF EXHIBITS ENDS

11.00 am JUDGING COMMENCES

SHOW OPENS AT 1.00pm

EVENTS (approx. times)

1pm – Nottingham Concert Band

1.30pm – Dako Flying Angels

2pm – Punch and Judy

2.30pm - Nottingham Concert Band

3pm – Dako Flying Angels

4pm – Duck Race

4.15pm – Presentation of prizes

4.30pm – Raffle Draw followed by Auction

**Sideshows and Stalls open all afternoon
– refreshments until 4.00pm**